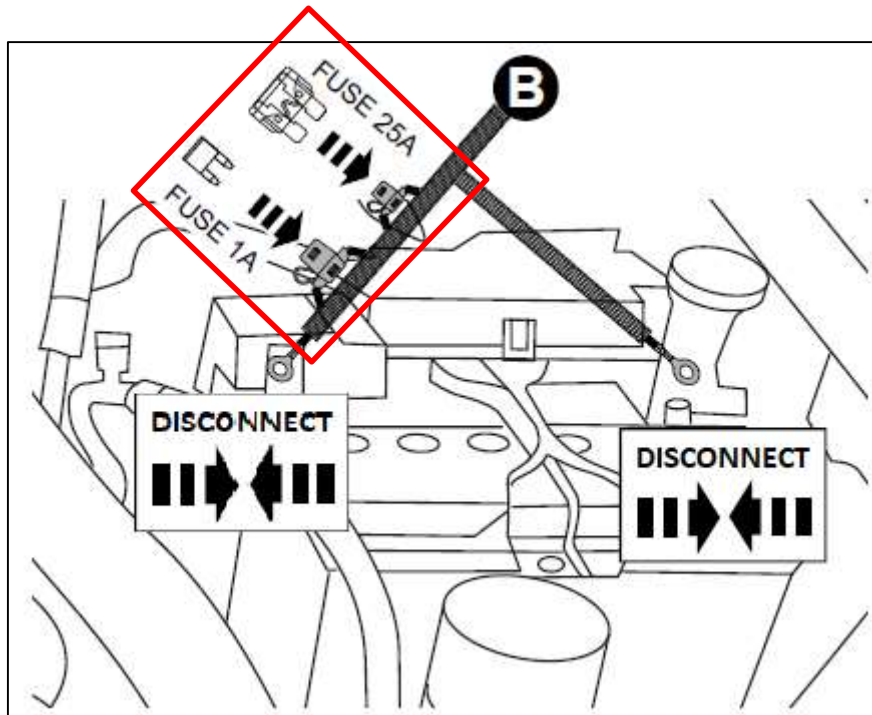


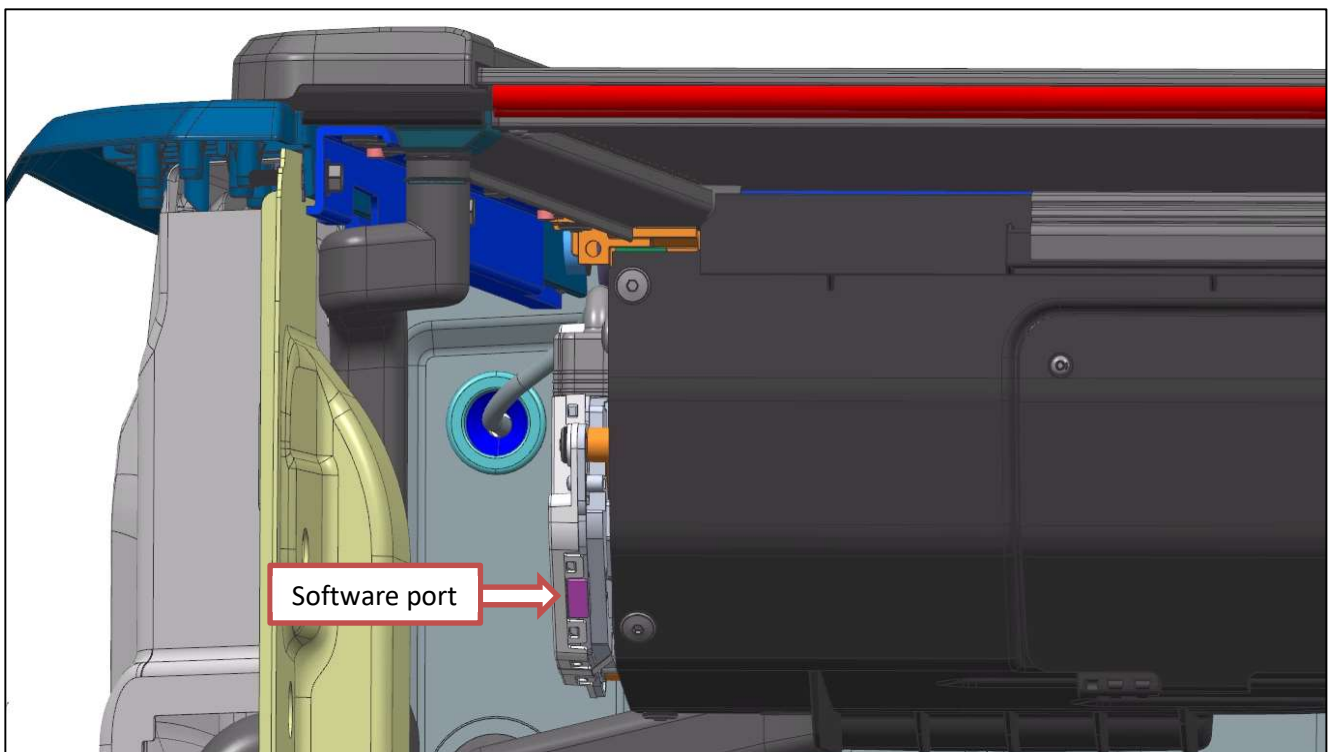
Software loading sequence

Ensure the following steps are performed in the sequence as laid out below to load the software via the bootloader into the EGR RollTrac ECU:

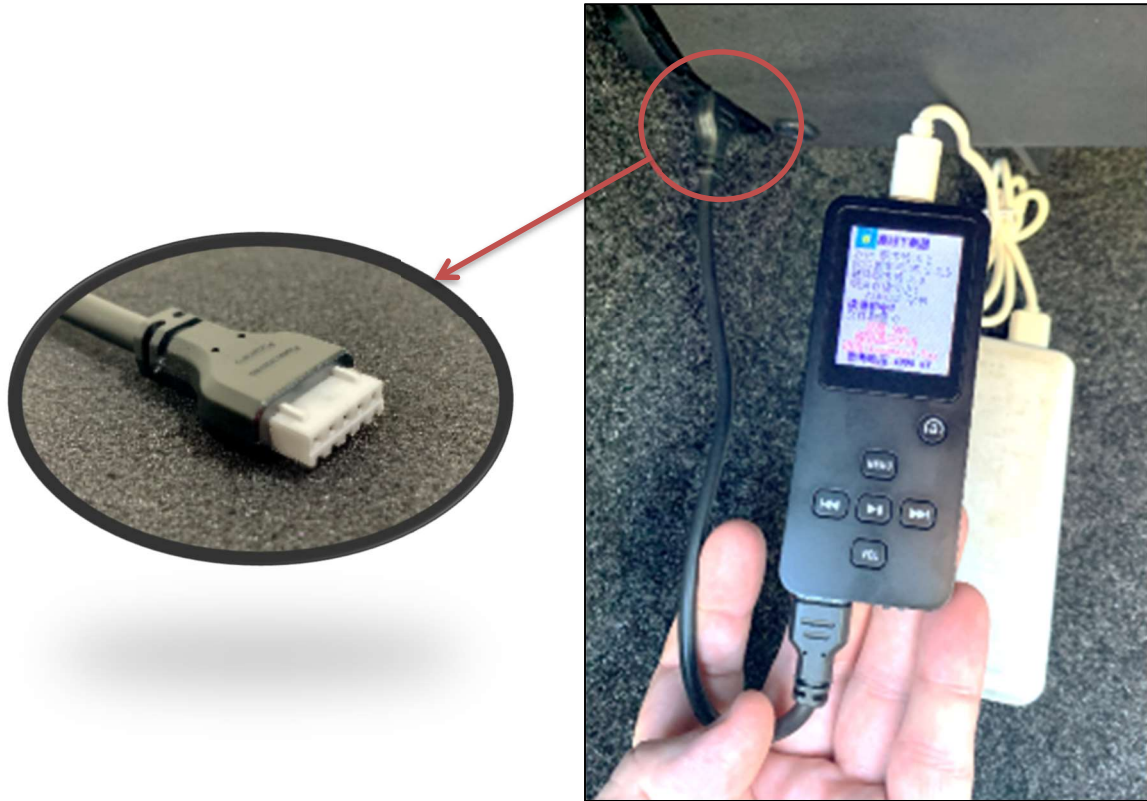
1. Disconnect the Power to the EGR RollTrac ECU by removing the 25A fuse **and** the 1A fuse from the harness connected to the vehicle battery and store the fuses for re-installation at the end.



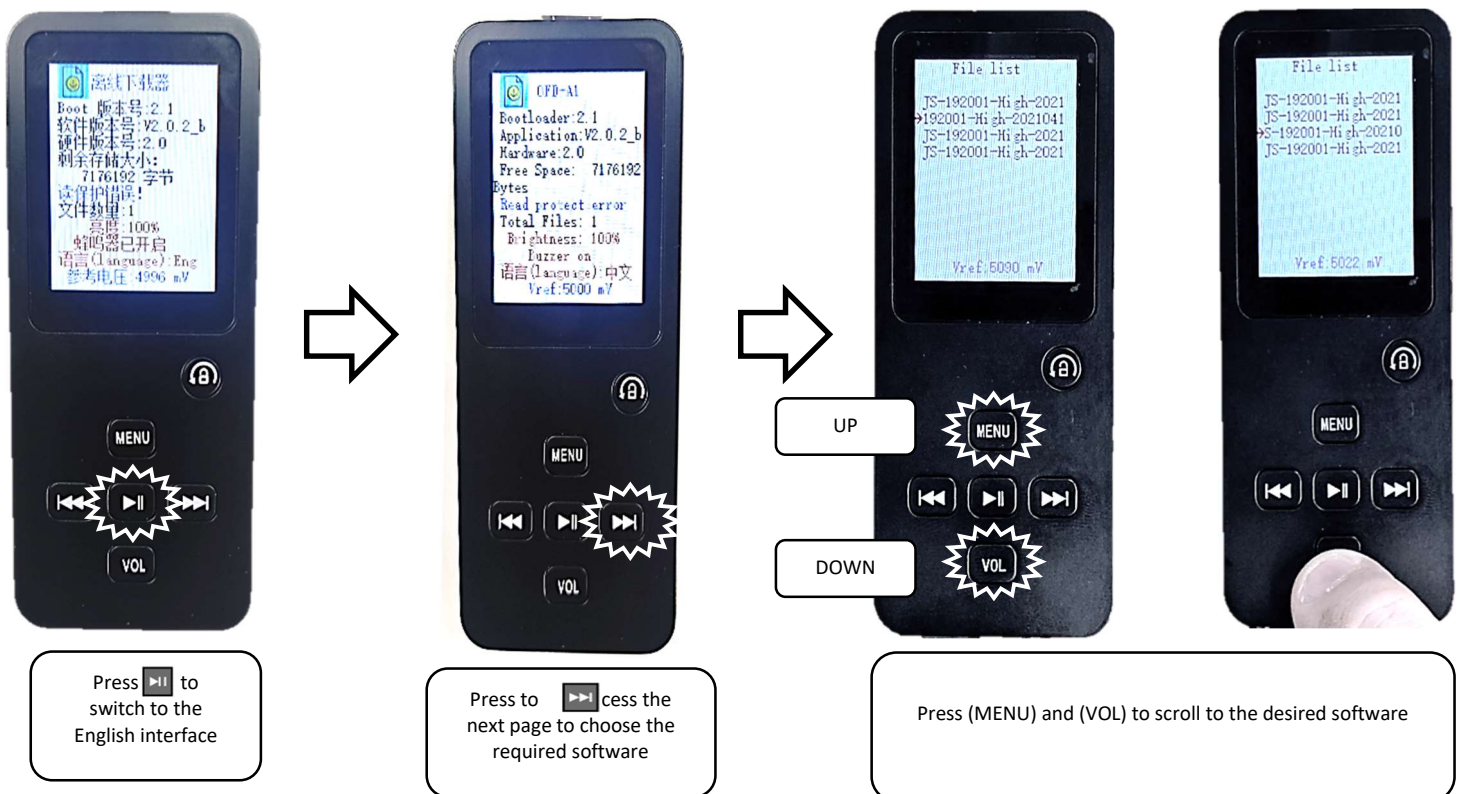
2. Remove the connector dust cover from the ECU and store in a safe place for re-installation later.



3. Connect bootloader with the external battery supply (Note the connector orientation). Plug the bootloader into the software port via the provided cable.

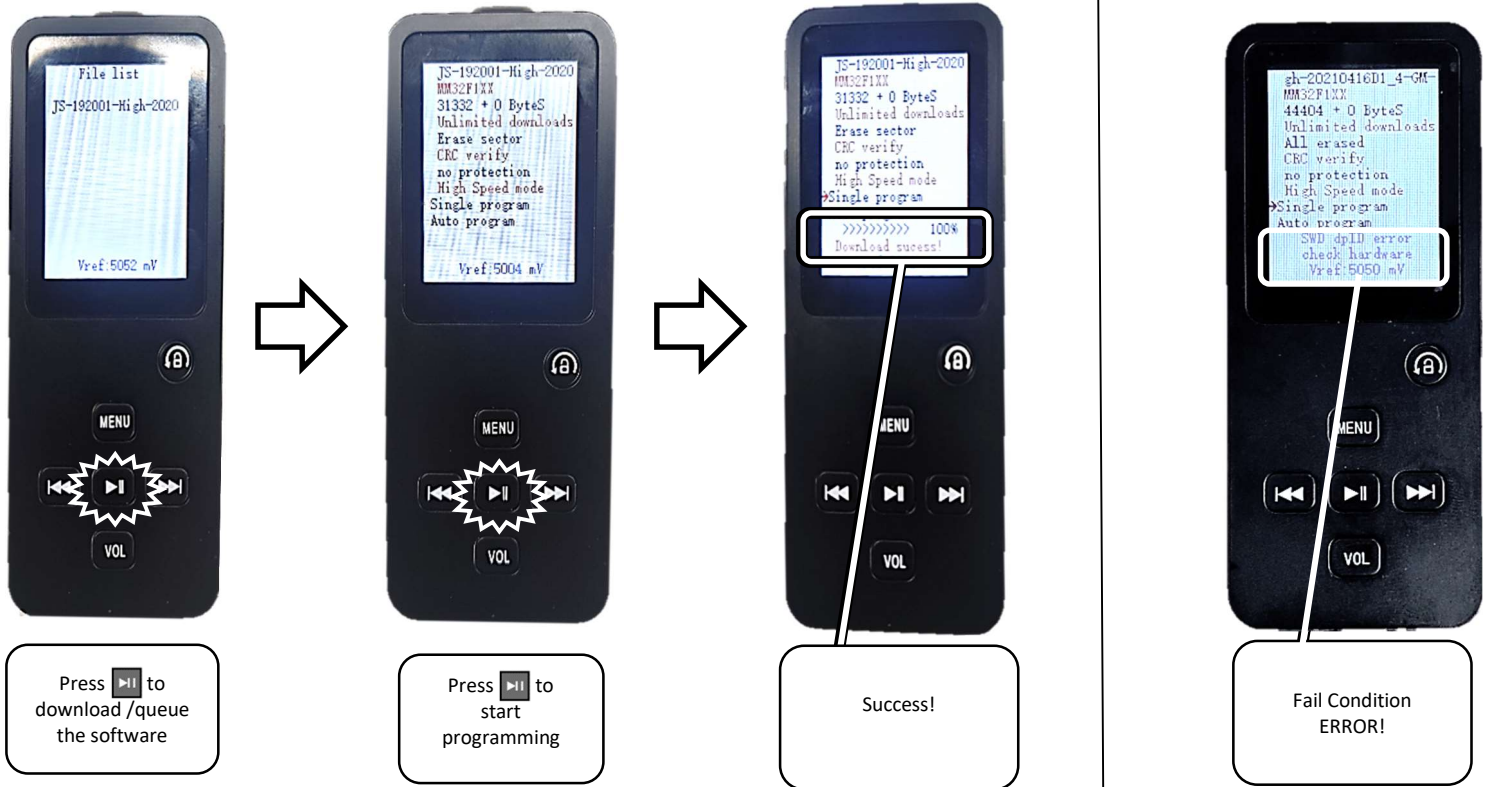


4. Scroll through the bootloader menus and select the correct software to upload.
Note: This step is only required if more than one software is stored.



- Once the correct software has been selected, press the middle button and wait for the software to upload successfully. Then, remove the bootloader from the ECU.

(Note: If upload fails, re-insert the ECU 4 pin connector then re-try the software upload then remove the ECU 4-pin connector for a minimum of 60 seconds)



Last steps: Reconnect the power to the EGR RollTrac by refitting the 25 A and 1 A fuses into the fuse holders and then recalibrate the EGR RollTrac by pressing both RollTrac push buttons for 10-15 sec. with the tail gate being open and the vehicle driver door open. Please follow the calibration process as per EGR RollTrac Owner's manual or Fitting Instructions.

